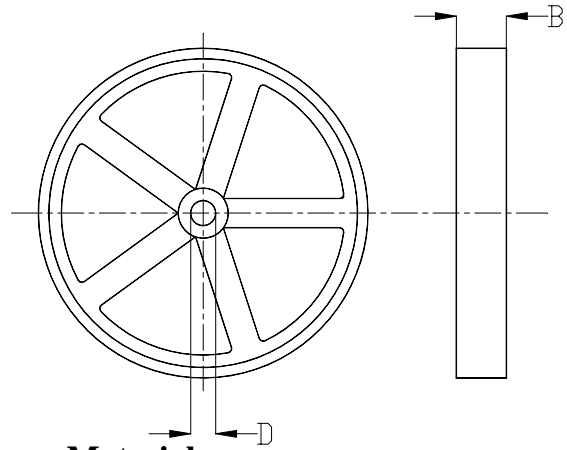


Wheels

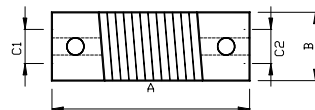


Type	Circumference	D	B	Material
9101	500mm	7-12	25	Rubber
9101.1	500mm	7-12	25	Vulkolan
9102	500mm	7-12	25	Profiling rubber
9103	500mm	7-12	25	Knurled aluminium
9108	200mm	6-8	12	Vulkolan
9109	200mm	6-8	12	Profiling rubber
9110	200mm	6-8	12	Knurled aluminium

SPECIFY INTERNAL DIAMETER (D)

Couplings

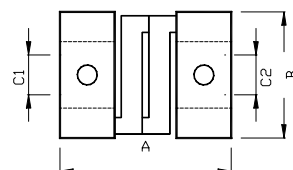
Normally



Type	A	B	C1/C2
9401	50	26	6-14
9402	35	16	5-8

SPECIFY C1 AND C2 DIAMETER

Antitorsion



Type	A	B	C1/C2
9406	38	25	10-12
9403	26	19	6-8

SPECIFY C1 AND C2 DIAMETER

Connectors

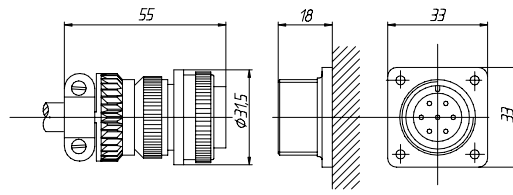
9409
(9 poles)

9413
(25 poles)

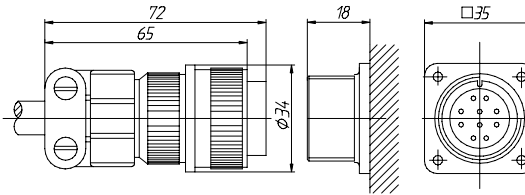
9414
(5 poles)

9415
(9 poles)

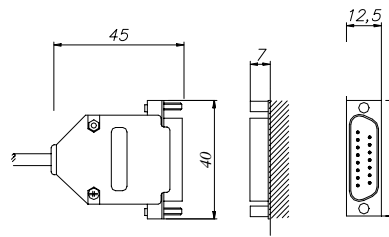
9416
(12 poles)



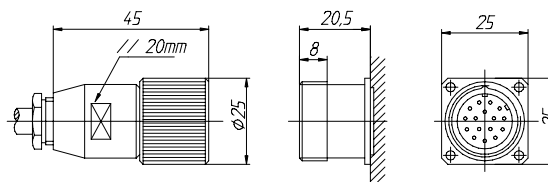
9418
(7 poles)



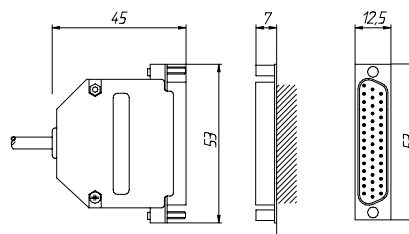
9419
(10 poles)



9423
(15 poles)



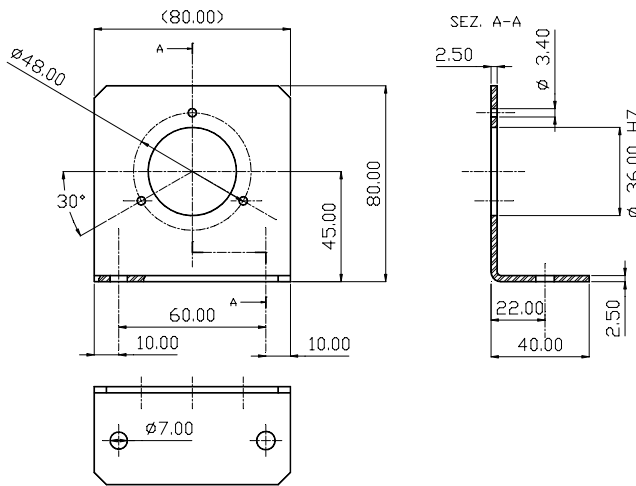
9426
(16 poles)



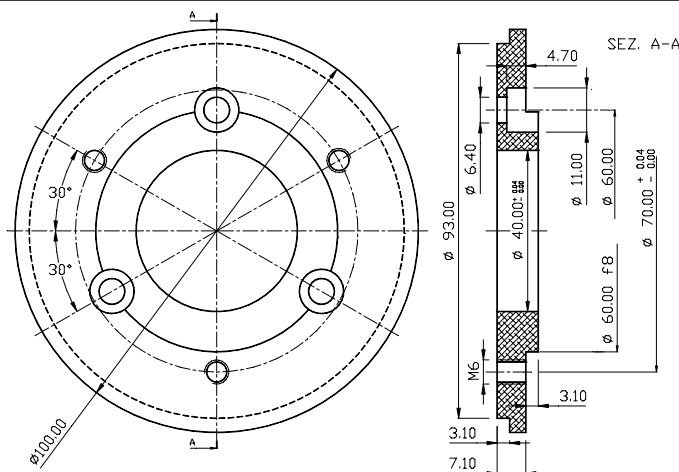
9444
(44 poles)

Flanges

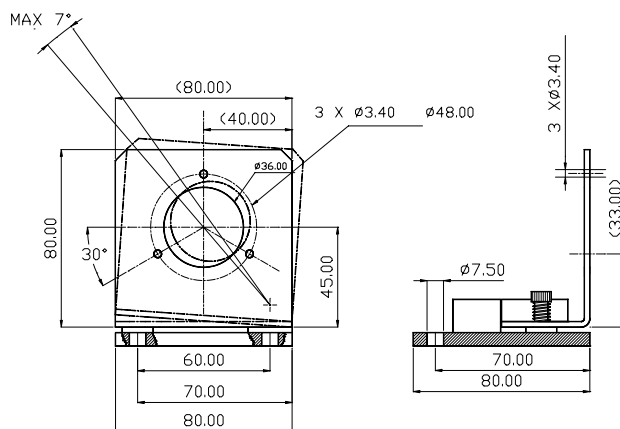
9203 (SPECIFIC FOR FLANGE Ø 58)



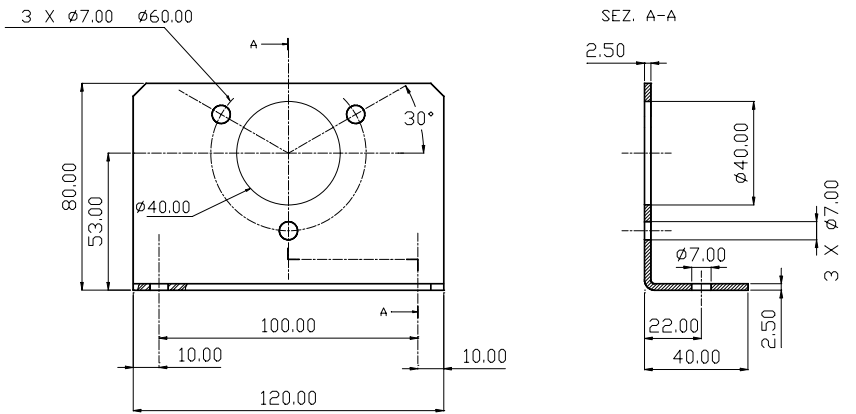
9210



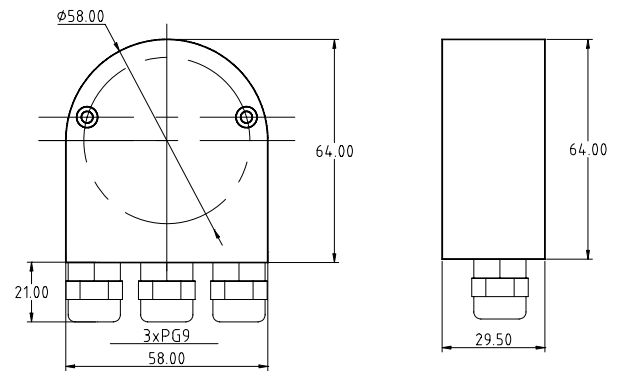
9213 (SPECIFIC FOR FLANGE Ø 58)



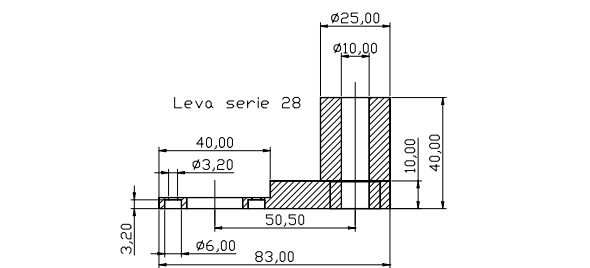
9301 (SPECIFIC FOR FLANGE Ø 90)



COP58PG



Lever for encoder series 28
Lev.280



Lever for encoder series H
Lev.H01

